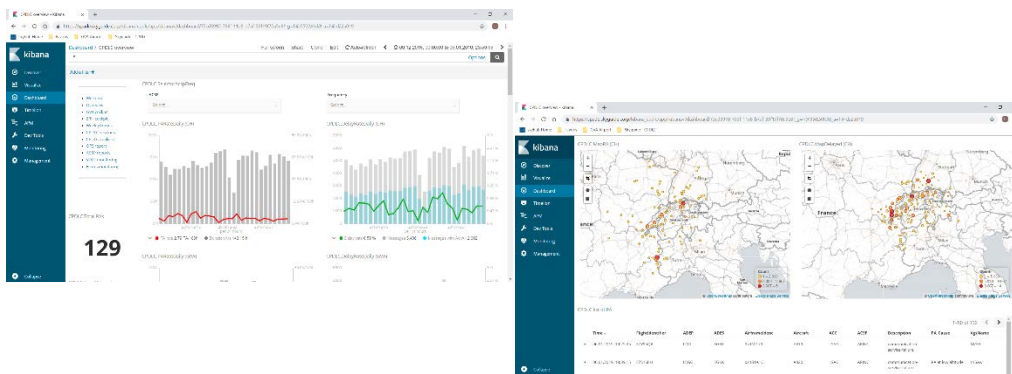




CPDLC COCKPIT

The CPDLC Cockpit is a web-based real-time monitoring solution **developed by an ANSP for ANSP's!** It provides unprecedented capabilities to monitor the CPDLC service quality in **real-time** through a **user-friendly** yet powerful search engine and customizable dashboards. It is based on a single cloud-platform shared by all participating ANSP's. Based on a common cloud-based open infrastructure, the CPDLC Cockpit uses **cutting-edge technology!**



System Capabilities

- ✓ For each CPDLC message: Full determination of used network, used VDL2 frequency, aircraft details etc. (even for airlines using both ARINC and SITA),
- ✓ Provides a real-time view of PA rate, Delayed messages rate, TRTD per Air/Ground Communications Service Provider (ACSP), frequency, airline, aircraft type, CMU type, VDR type and more!
- ✓ The monitoring cockpit provides a real-time geographic view of PA and Delayed message occurrences,
- ✓ The system allows proactive identification of network problems (ACSP, impacted geographic region, VDL2 frequency, specific VDL2 ground station),
- ✓ Easy creation of reports (monthly, weekly) for ACSP's including presentation of VDL2 frequencies loads for discussion,
- ✓ Possibility to generate simple high-level analysis of PA or other problems impacting aircrafts thanks to parallel presentation of CPDLC and VDL2 messages (TP4 to be added in later release of the product).

Contact:
skyguide

Tel. +41 43 931 65 77
sales@skyguide.ch
www.skyguide.ch

skyguide
swiss air navigation services ltd.
flugsicherungsstrasse 1-5
CH-8602 Wangen

Your Benefits

- ✓ Compliance with the European Commission Regulation (EC) 29/2009 (obligation to monitor QoS and conformance of ACSPs with level of performance),
- ✓ System can be easily integrated into ANSP's infrastructure,
- ✓ ANSP can customize its own dashboards for more flexibility,
- ✓ Creation of simple to understand graphical report and overviews
- ✓ Independent external monitoring of VGS behavior (e.g. after upgrade).



CPDLC.Performances_monthly

@timestamp per month	95th percentile of TRTD	99th percentile of TRTD	Nb sessions	Nb messages	Con. Time [h]
2018-01-01	10	20	11357	52509	2832.993
2018-02-01	10	26.582	11087	52622	2728.621
2018-03-01	11	25	14330	67331	3584.652
2018-04-01	11	25	17329	82125	4438.031

CPDLC list of PA

Time	FlightIdentifier	ADEP	ADES	Airframement	Aircraft	ACC	ACSP	Description
12.10.2018, 09:28:04	TCX1393	LIRN	EGCC	0x400867	A321	LSAG	SITA	communication-service-failure
12.10.2018, 09:12:31	CND114	LIEA	EHAM	0x484FAB	B738	LSAG	ARINC	communication-service-failure
12.10.2018, 08:17:45	THY8AP	LTBA	LFLL	0x4BAACE	B738	LSAG	SITA	timer-expired
12.10.2018, 08:09:44	THY8AP	LTBA	LFLL	0x4BAACE	B738	LSAG	SITA	timer-expired
12.10.2018, 08:03:14	THY8AP	LTBA	LFLL	0x4BAACE	B738	LSAZ	SITA	timer-expired
12.10.2018, 07:55:08	THY8AP	LTBA	LFLL	0x4BAACE	B738	LSAZ	SITA	timer-expired

VDL2.Total X25 RESET and X25 CLEAR errors



VDL2 list of X25 RESET and X25 CLEAR errors

Time	MSG_Type	SourceType	Airframement	VgsName
12.10.2018, 23:10:28	X25 CLEAR REQ	(Ground station, On ground)	0x4CA92E	ZRHX
12.10.2018, 22:48:11	X25 CLEAR REQ	(Ground station, On ground)	0x344446	GVA7
12.10.2018, 22:16:34	X25 CLEAR REQ	(Ground station, On ground)	0x47340F	ZRHX

Contact:
 skyguide
 Tel. +41 43 931 65 77
 sales@skyguide.ch
 www.skyguide.ch

skyguide
 swiss air navigation services ltd.
 flugsicherungsstrasse 1-5
 CH-860z Wangen