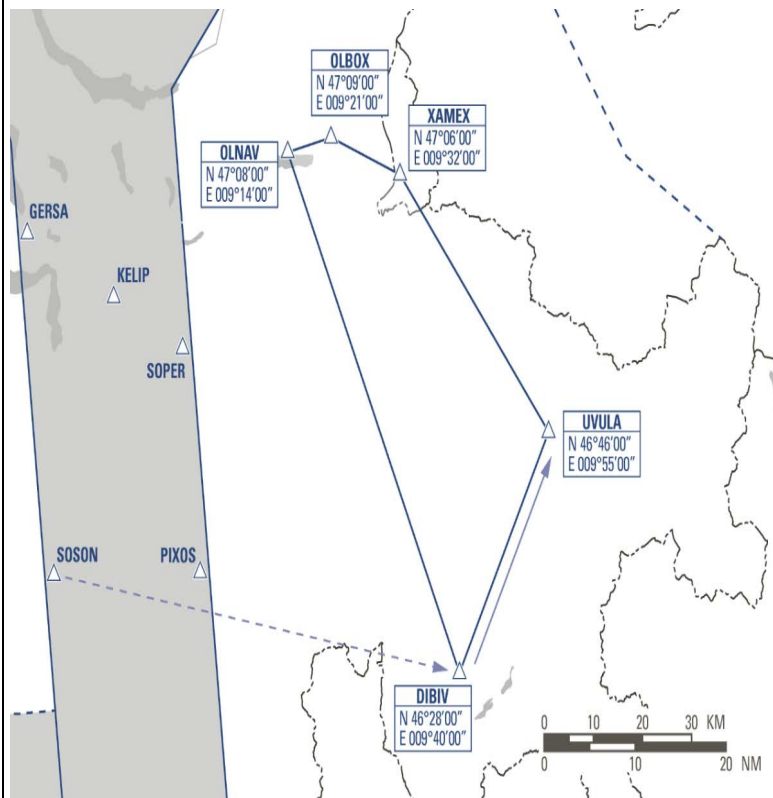


Procedures and Data Form for Test-Flight Pattern East A9



Flight procedure

Entry: After SOSON / PIXOS proceed to DIBIV to join the Test-Flight Pattern via UVULA-XAMEX-OLBOX-OLNAV-DIBIV at FL 240 or below, unless otherwise specified by ATC.

Exit: via KELIP / SOPER or according to ATC clearance.

Flight plan (example)

Item 8: IX

Item 15: N0220FXXX ... GERSA
UN850 SOSON STAY1/YYYY KELIP

(XXX = insert Flight Level FL240 or below, unless otherwise specified by ATC)

(YYYY = insert duration of test like 0130)

Item 18: RMK/TEST FLT RTECOORATC LSAZ
STAYINFO1/TEST PATTERN EAST A9

Before and after test pattern, FPL shall be compliant with standard flight planning rules.

(RTECOORATC shall not be indicated together with IFPSRA as there is a risk that IFPS staff could modify the route (or part of) that has been previously coordinated with ATC)

Airspace and ATC Request

Flight data

Operated by:		Date of flight:	
ACFT REG / Call sign:		Type of aircraft:	
Point of DEP:		DEP Time (UTC):	
Entering pattern (UTC):		Exiting pattern (UTC):	
Requested FL:		Destination:	
Telephone:			
Remarks:			

The airspace request has to be sent to AMC Switzerland latest by WED of the previous week by e-mail: testflight-eastA9@skyguide.ch. (Phone +41 43 931 62 33 only for support)

1 hour before T/O contact ATC via phone +41 44 801 13 10

To be completed by AMC Switzerland/ATC

Coordinated/modified by:

Unit, Name, Date:	
-------------------	--