

Skyguide achieves high first-half punctuality and productivity against a slight recovery in traffic volumes

Geneva, 9 July 2014. Skyguide, Switzerland's air navigation service provider (ANSP), managed and monitored 554,593 civil IFR flights in the first six months of 2014, a 0.3% increase on the same period last year. The slightly higher traffic volumes had no adverse impact on the company's operating performance, with a historical record 96.9% of all flights handled without delays. Skyguide also ranks very highly with Eurocontrol, the sector's umbrella organization, in productivity terms.

Higher volumes handled

Air traffic volumes have generally been depressed in the face of the difficult global economic situation in Europe since the end of 2011. Skyguide saw declines in its own traffic levels for the first four months of 2014; but with the year-on-year increases of 1.0% and 2.4% in May and June respectively, its total traffic volume for the first six months of the year was 0.3% up on 2013 levels. This is substantially below the period growth for Europe as a whole, however, which amounted to 2.3%. As Eurocontrol's STATFOR-sourced statistics reveal, the recovery in traffic volumes was far from uniform across the various traffic categories:

Traffic trends by category (Europa)

Cargo traffic	- 0.6%
Business aviation	- 0.7%
Charter flights	- 5.2%
Traditional airlines	+ 1.0%
Low-cost carriers	+ 6.5%

IFR flights¹ handled by skyguide in the first half of 2014

	January-June 2014	January-June 2013	Change
Total IFR flights	554,593	552,988	+ 0.3%
of which en-route traffic	320,698	317,154	+ 1.1%

The volume of en-route traffic handled by skyguide in the first half of 2014 was 1.1% up on the comparable period last year. By contrast, the number of controlled movements (takeoffs and landings) throughout Switzerland declined once again, by 1.3%. IFR movements at Zurich Airport were down 1.0%, while Geneva Airport reported a 0.9% increase in its total movement volume.

Area control centres see differing volume trends

The numbers of flight movements that an ANSP's area control centres are required to handle are a key indicator of the workloads involved. Skyguide's Geneva and Dübendorf area control centres (ACCs) saw differing trends here in the first-half period. While the Dübendorf ACC experienced a 1.2% decline in its movement volumes, the Geneva ACC handled 2.0% more movements than last year over the period concerned.

¹ IFR or "instrument flight rules" flights are performed in controlled airspace and require air traffic management services to ensure their safe and efficient operation.

Daily peak of 4,026 flights on 27 June 2014

Skyguide's busiest day to date in 2014 was Friday 27 June, when 4,026 flights were handled. This is a substantial 3.2% more than the busiest day in the first half of 2013, which saw 3,900 flights.

2014 first-half movement volumes by area control centre and airport:

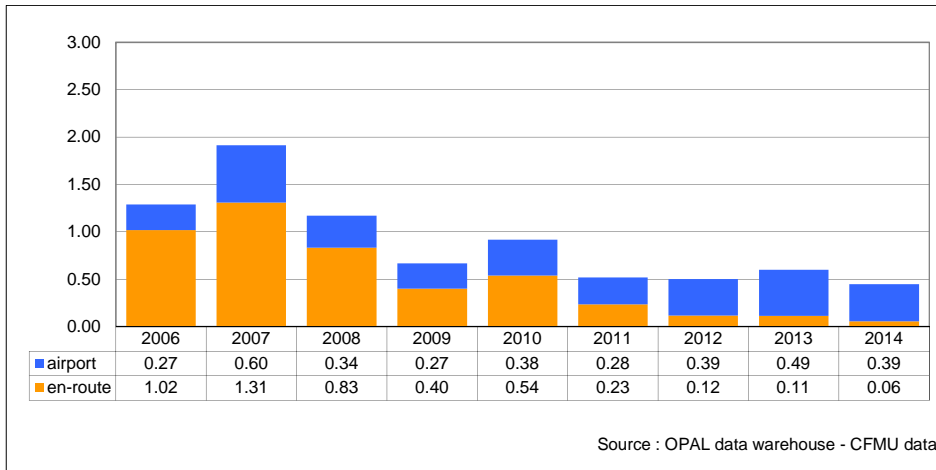
	January-June 2014	January-June 2013	Change 2013-14
Area control centres			
Geneva	310,103	304,082	+ 2.0%
Zurich	353,527	357,911	- 1.2%
Arrival/Departure Control			
Bern	8,323	10,136	-17.9%
Buochs	849	845	+ 0.5%
Donaueschingen	810	750	+ 8.0%
Friedrichshafen	7,823	8,224	- 4.9%
Geneva	91,639	90,806	+ 0.9%
Grenchen	2,419	2,808	- 13.9%
Les Eplatures	979	892	+ 9.8%
Lugano	4,186	4,609	- 9.2%
Sion	3,032	2,751	+ 10.2%
St. Gallen-Altenrhein	4,877	5,070	- 3.8%
Zurich	123,941	125,209	- 1.0%

Increased traffic volumes – high punctuality

Skyguide continued to enhance its already excellent operating performance in the 2014 first-half period. Some 96.9% of all flights were handled with zero delay – a further improvement on the previous record of 96.7%, set in 2012.

Most capacity-related air traffic control delays are incurred during peak operating periods. Needless to say, with the general slight rise in traffic volumes, skyguide's capacity remains fully utilized at these peak times; and this explains the delays that are occasionally suffered in skyguide airspace by its en-route traffic. At the same time, the company still more than meets the European performance targets here for 2014.

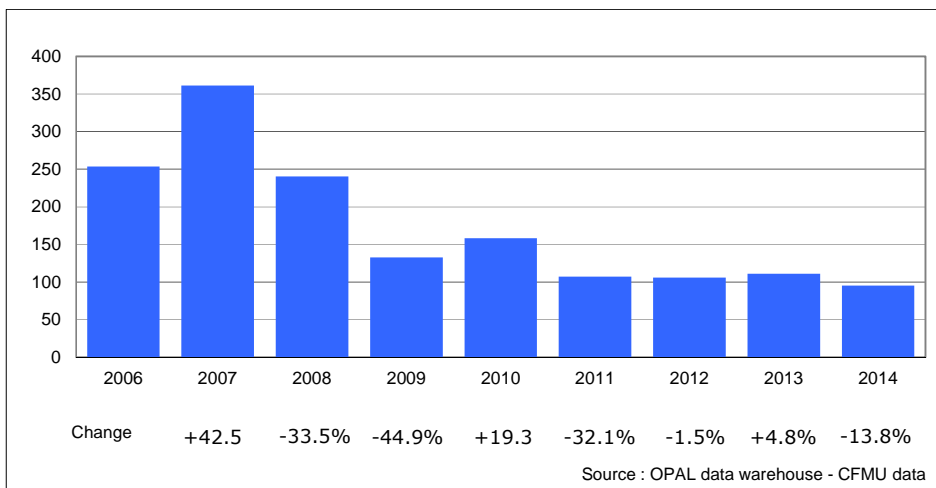
**Average airport and en-route delays per flight (in minutes)
 January-June**



Skyguide has seen sizeable declines in its average en-route delays (down 51.2% from 2013) and its average airport delays (down 19.9%) since the beginning of the year.

- Average delay per flight – arrivals/departures: 0.39 minutes (= 23.4 seconds)
- Average delay per flight – en-route: 0.06 minutes (= 3.6 seconds)

**Average skyguide delayed flights per day
 January-June**



The average number of delayed flights per day for the period amounted to 95, a substantial decline from the 111 of last year.

Highly complex airspace

As statistics maintained by Eurocontrol show, skyguide manages the most complex airspace in Europe. This poses sizeable challenges for skyguide's operations and personnel, in terms of both the sheer volumes of flights handled and the structure of its air traffic flows.

High productivity in European comparison

Productivity-wise, too, skyguide can report a quality performance. The 2013 Eurocontrol Performance Review Report places Switzerland's ANSP fourth in Europe in controller productivity terms. Skyguide is only surpassed here by the Maastricht Upper Airspace Control Centre, NATS of the UK and Germany's DFS.

skyguide
swiss air navigation services ltd.
media relations
CH-1215 Geneva 15

Contact:

phone: +41 22 417 4008
email: presse@skyguide.ch
internet: www.skyguide.ch

Skyguide is responsible for providing air navigation services in Switzerland and in certain parts of neighbouring countries. With its workforce of 1,400 employees who are active at 14 locations in Switzerland, skyguide safely and reliably guides almost 3,100 civil and military flights a day – or 1.1 million a year – through the busiest and most complex airspace in Europe. Skyguide is committed to continuous improvement, targeted innovation and creative collaboration. Together with its partner organizations in Belgium, France, Germany, Luxembourg and the Netherlands, skyguide is a member of the FABEC alliance to manage Central European airspace. Skyguide is a non-profit limited company, the majority of whose shares are held by the Swiss Confederation. Its head office is in Geneva.
